



Lanivet School Newsletter

www.lanivet.cornwall.sch.uk Federated with Cardinham School, Wheal Prosper www.whealprospefederation.co.uk



Weekly Awards



Teacher Focus	Mega Mathematician Magician	Wonderful Writer	Remarkable Reader
Finn W Mason H Devlin L Darren K Alex H-E	Tia W-B Lara B	Harry H Poppy C Lauren B Alex T	Lucy R Ava F Jeff N Harry M

Our week at Lanivet...

There have been lots of fantastic activities happening here this week....

Reception Class have been exploring the new tinkering corner with their screwdrivers. They love Forest School and found a butterfly, which they all painted pictures of. They have also been working hard on numbers and name writing. Class 1 have enjoyed Forest School this week too, they have learnt a new word every day, talked about amazing animals and learnt about numbers with the help of a hungry crocodile. Class 2 have been learning about the human life cycle, this involved sharing baby photos and drawing pictures of Miss Haworth as an old lady with lots of wrinkles! Class 3 have learnt about volcano formation, then they made their own volcanoes. They have also been learning about fossils, today they started creating dinosaur skeletons using bone shaped dog biscuits! Class 4 have recreated Egyptian Canopic Jars using clay and papier mache. They have also written an amazing adventure packed story based on the picture book Quest. Class 5 have finished writing their recounts of the Viking raid on Lindisfarne in 793 and are now looking at the features of poems, and the role skalds played in the time of the Vikings. They also celebrated National Poetry Day on Thursday by listening to some of Michael Rosen's poems and short stories. Class 6 have conducted experiments on how climate change is effecting sea levels and how heat energy is causing the icebergs to melt. In art, they have been exploring Ted Dyers technique of colour harmony.

What a busy week for the Lanivet pandas!

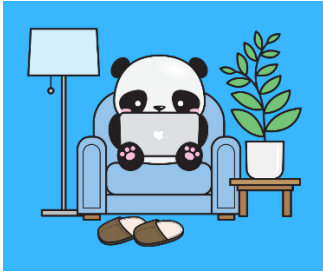
PTA Zoom meeting

Our wonderful PTA are having a Zoom meeting tonight to discuss fundraising ideas for the coming term.

The meeting starts at 20:00 this evening, if you would like the password and meeting ID, please contact the PTA Team via their Facebook page, Friends of Lanivet School.



Email



We are in the process of setting up new email software to allow us to communicate with parents. Email communication is quick, efficient and environmentally friendly.

If you have not already supplied us with your email address and you would like to receive email communications from us please let us know by emailing secretary@lanivet.cornwall.sch.uk

Reminder



Please be kind, be respectful, keep a 2 metre distance.

Thank you



We have had feedback from parents that there are some concerns around drop off and pick up times. Here are just a couple of reminders to help everyone stay safe and happy.

- Please do not start to queue until your allotted time has started.
- Please remember to keep a minimum of two metres distance from other families during school drop off and collection times.
- When queueing to collect your child please be kind and respectful to other members of our school community, allow them space to pass you at a distance.
- Please do not park near the school, use any of the car parks available in the village
- Please follow the government guidelines about meeting up outside of school

ParentPay

Please remember to check your ParentPay account regularly, particularly for school lunches and Breakfast Club. If you have a debit balance as a family of more than £20 we may withdraw the service.

If you have ParentPay debts that you are worried about, please give us a call in the office and we will always be happy to help you.



Class Dojo

If you have a child in Class 1-6 and you have not yet activated your Class Dojo account, please do. It is a fabulous way for your teacher to share information and keep you updated on the exciting events that are happening in your child's school day. If you need your log in details sent to you again please contact your class teacher.



Your School Lottery -

<https://www.yourschoollottery.co.uk/lottery/school/lanivet-cp-school>

Did you know we have a school lottery?



For just £1 a week, you are entered into both the local draw (current prize £15 but the more tickets we sell the higher the prize pot!) and a national draw with a chance of winning £25,000.

More importantly, this is an incredible way to raise funds for our school! So far this year we have raised £978, which gets spent on Christmas events, resources, improving play areas and much more.

Sign up and see if you can beat Mrs Davies in the school office who has had the local prize three times already!

Diary Dates	
Friday, 23 rd October 2020	Break up for half term, no After School Care Club
Monday, 2 nd November 2020	INSET Day, school closed to pupils
Tuesday, 3 rd November 2020	Start of second half of Autumn Term
Friday, 18 th December 2020	Break up for Christmas, early dismissal
Monday, 4 th January 2021	INSET Day, school closed to pupils
Tuesday, 5 th January 2021	Start of Spring Term
Friday, 12 th February 2021	Break up for half term, no After School Care Club
Monday, 22 nd February 2021	Start of second half of Spring Term
Thursday, 1 st April	Break up for Easter, early dismissal
Friday, 2 nd April 2021	Good Friday - Bank Holiday
Monday, 5 th April 2021	Easter Monday - Bank Holiday
Monday, 19 th April 2021	Start of Summer Term
Monday, 3 rd May, 2021	May Bank Holiday
Friday, 28 th May, 2021	Break up for half term, no After School Care Club
Monday, 31 st May, 2021	Spring Bank Holiday
Monday, 7 th June 2021	Start of second half of Summer Term
Friday, 11 th June 2021	INSET Day, school closed to pupils
Friday, 9 th July 2021	INSET Day, school closed to pupils
Friday, 23 rd July 2021	Break up for Summer Holidays, early dismissal

Community Events	
Saturday, 3 rd October 2020	Lanivet Community Litter Pick – meet in the village car park for 10am. Contact Margaret Swadling on 02108-831529 for details.